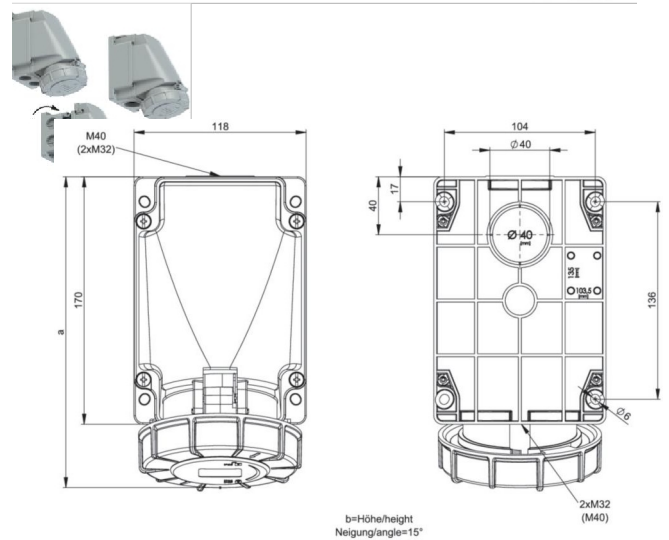
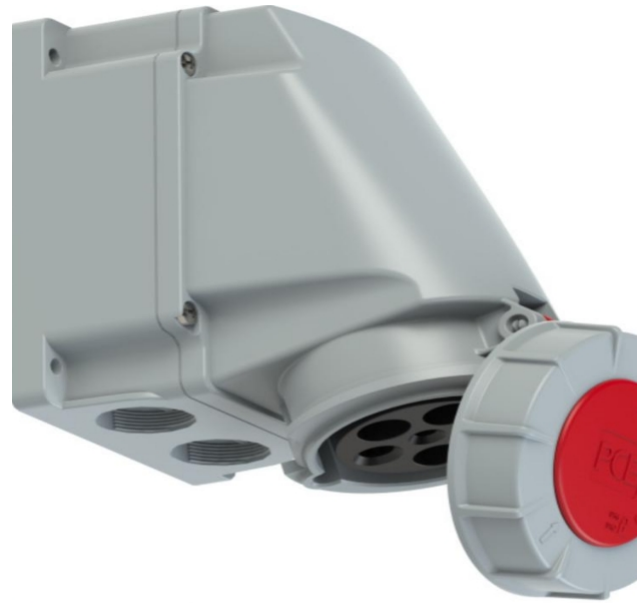


PCE data sheet

Item no.	1356
Description	CEE wall socket 63A 5p 6h IP67 POWER TWIST
Longitudinal wire	CEE wall socket 63A 5p 6h IP67 POWER TWIST Housing material : PC/ABS New current: 63 A Pole number: 5 (3P+N +PE ) Responsibility: 6h Rated voltage/frequency: 200/346V~ - 240/41 5V~/50+ 60Hz Contacts: Messing, with lamella contact (Cu Be) Connection: Frame clamp with Screws Lead in g: top, bottom or bottom (housing 180° drehbar) Incl. Blindshwing type: IP 66/IP 67
GTIN (EAN)	90033991 35064
ETIM 9.0	EC001321
Opposition	AT
Execution	Filing
Zolltarifmer	85366990
I.E.C. current strength	63 A
Net weight	0,923 kg
Pole count	5
Packaging size	1
Voltage according to EN 60309-2	400 V (50+ 60 Hz) red
Min. destination	1
Uhrzeitstatement	6 h
Color	red
Type of protection (IP)	IP67
Connection	Screw terminal
Cable insertion	Connection
Material	Plastic
Contact material	Cu Zn
SURFACE TREATMENT CONTACTS	untreated
Type of fastening	External fastening
Insulation	Yes
Military management	Nein

a	213 mm
b	173 mm
Conductor flexible	6-16 mm <sup>2</sup>
Conductor rigid	6-25 mm <sup>2</sup>
Contact pressure	200 N cm
Housing sheaths	200 N cm
Dimension lengths	100 mm
Abisoliallengths	15-18 mm
Ambient temperature	-25 - 40 °C
Temperature stability	-25 - 80 °C



<https://www.pcelctric.at/shop/en/?func=detail&artnr=1356>